

TRANSFORMING A NEIGHBORHOOD STRENGTHENING A CITY

white + burke
VERMONT
DEVELOPMENT
CONFERENCE

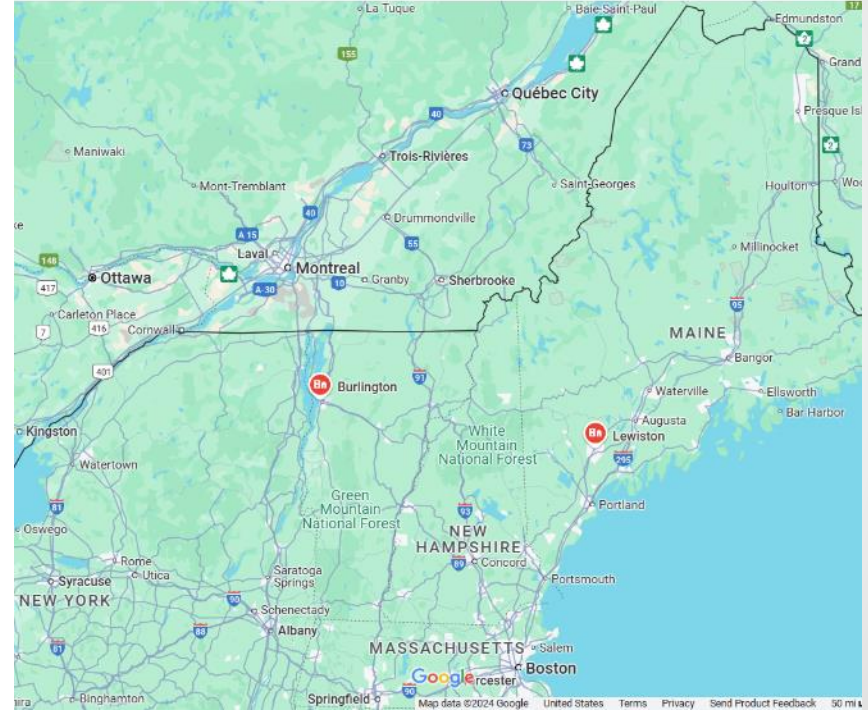
Lewiston, Maine



Image credit: Richard Plourde Photography

Lewiston, Maine

- Lewiston
 - 37,121 population, 2nd city
 - 19.3% BIPOC
 - 39.5 years median age
 - \$54,317 median household income
- Burlington
 - 44,743 population, largest city
 - 14% BIPOC
 - 27.4 years median age
 - \$64,931 median household income



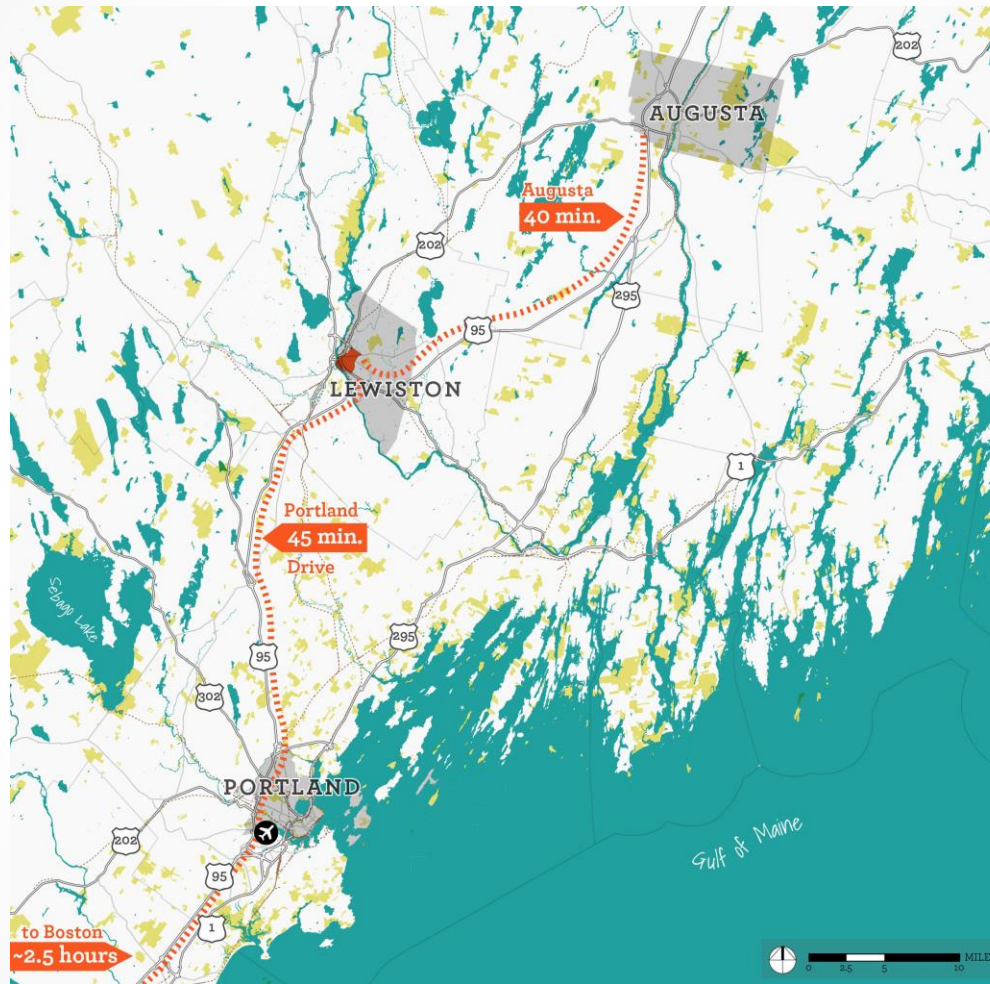
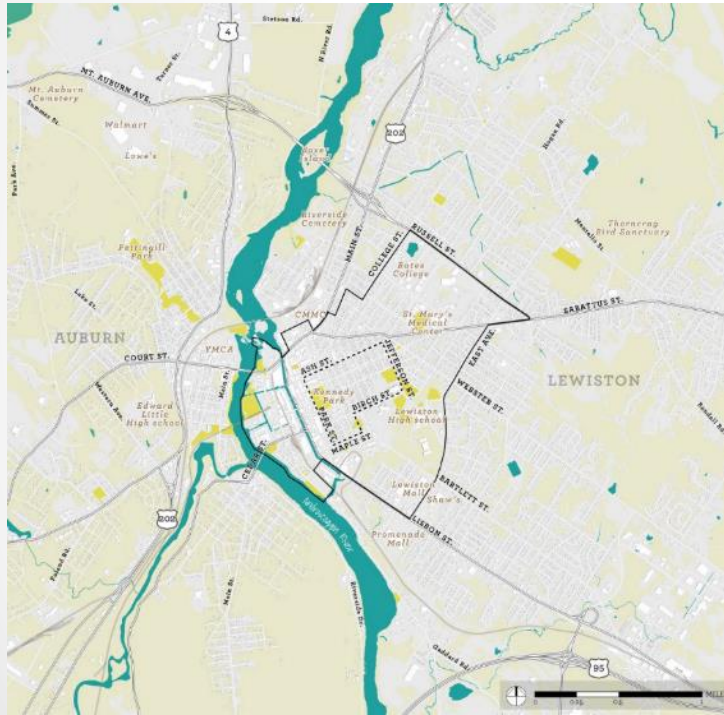


Image credit: Growing our Tree Streets Transformational Plan

Lewiston, Maine



Tree Streets Neighborhood



- CONTEXT**
Source: Maine.gov, City of Lewiston
- CHOICE STUDY AREA
 - ⬡ TREE STREETS NEIGHBORHOOD
 - PARK
 - WOODED AREA
 - RIVER
 - RAIL

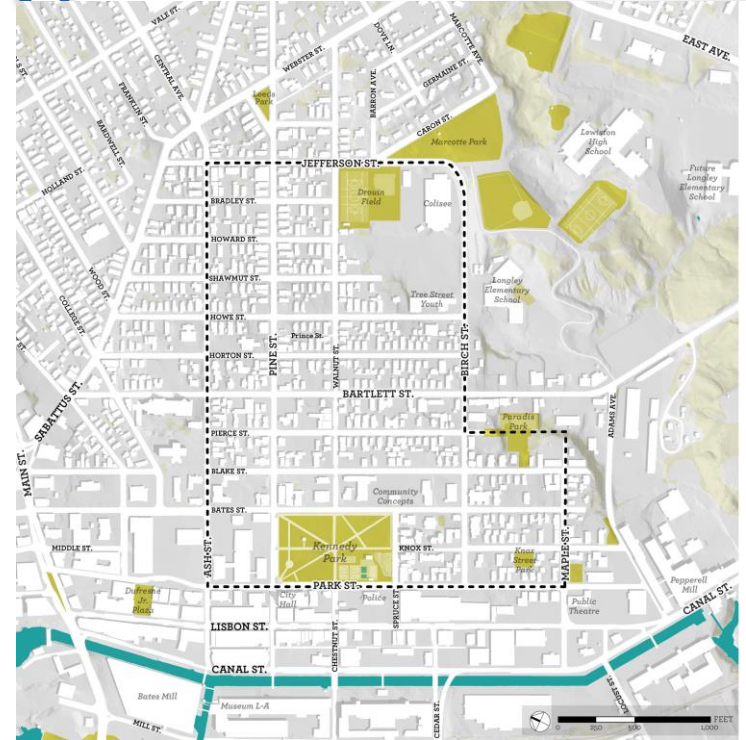


Image credit: Growing our Tree Streets Transformational Plan

Tree Streets Neighborhood

- 80% housing stock constructed prior to 1970
 - 67% prior to 1950
- 210 children under 6 in Lewiston in 2013-2017 had confirmed elevated blood lead levels
 - 72% lived in Tree Streets Neighborhood

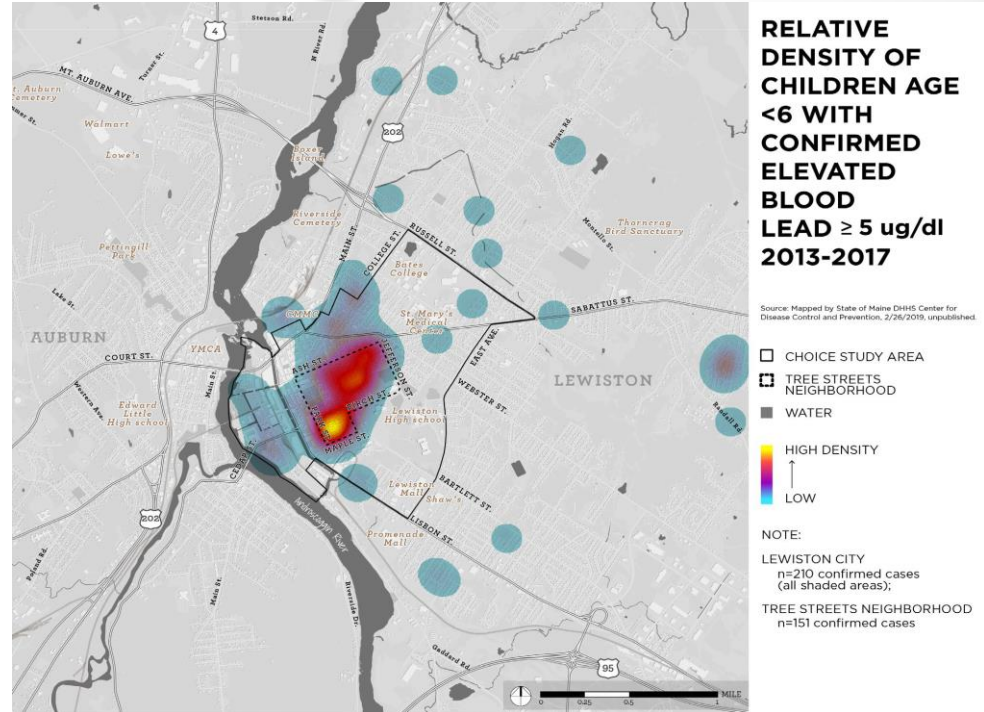


Image credit: Growing our Tree Streets Transformational Plan

Choice Neighborhood Plan

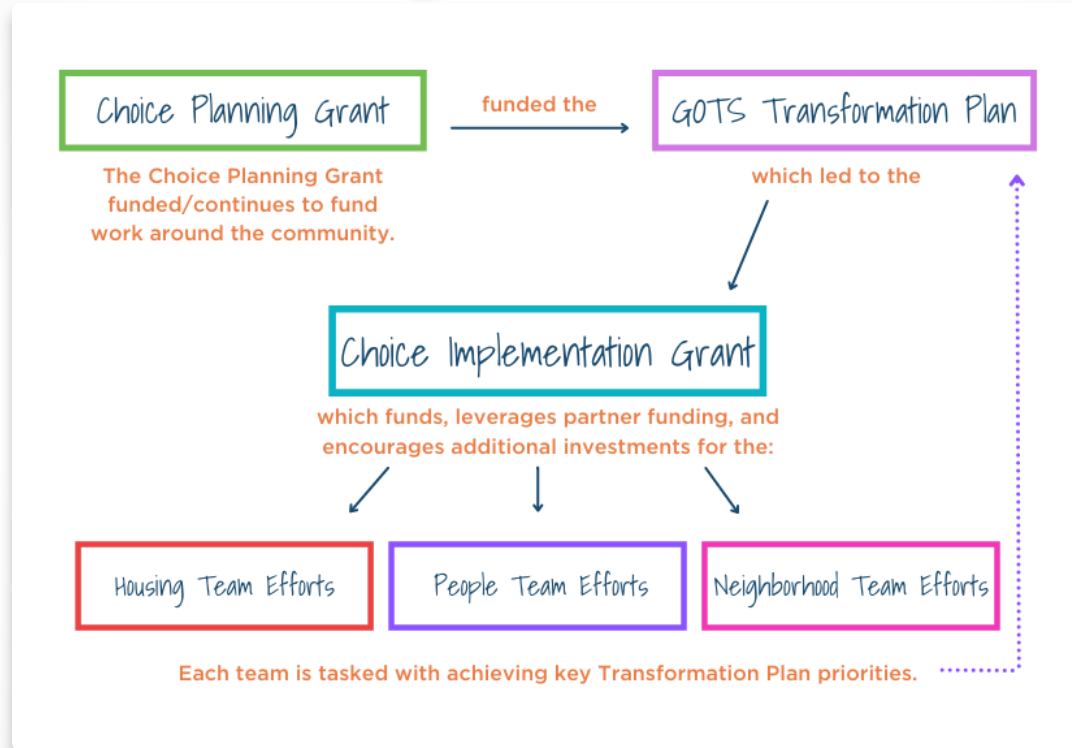


Image credit: Growing our Tree Streets Transformational Plan

Implementation



Photo credit of Ryan Donovan, MaineBiz



Photo credit: Russ Dillingham, Sun Journal



Photo credit: Sun Journal



Photo credit: Lewiston Housing

QUESTIONS?

SPEAKERS

Beth Boutin
Evernorth

bboutin@evernorthus.org

Chris Kilmurry
Lewiston Housing

ckilmurry@lewistonhousing.org

Christina Mortensen
HUD

Christina.L.Mortensen@hud.gov