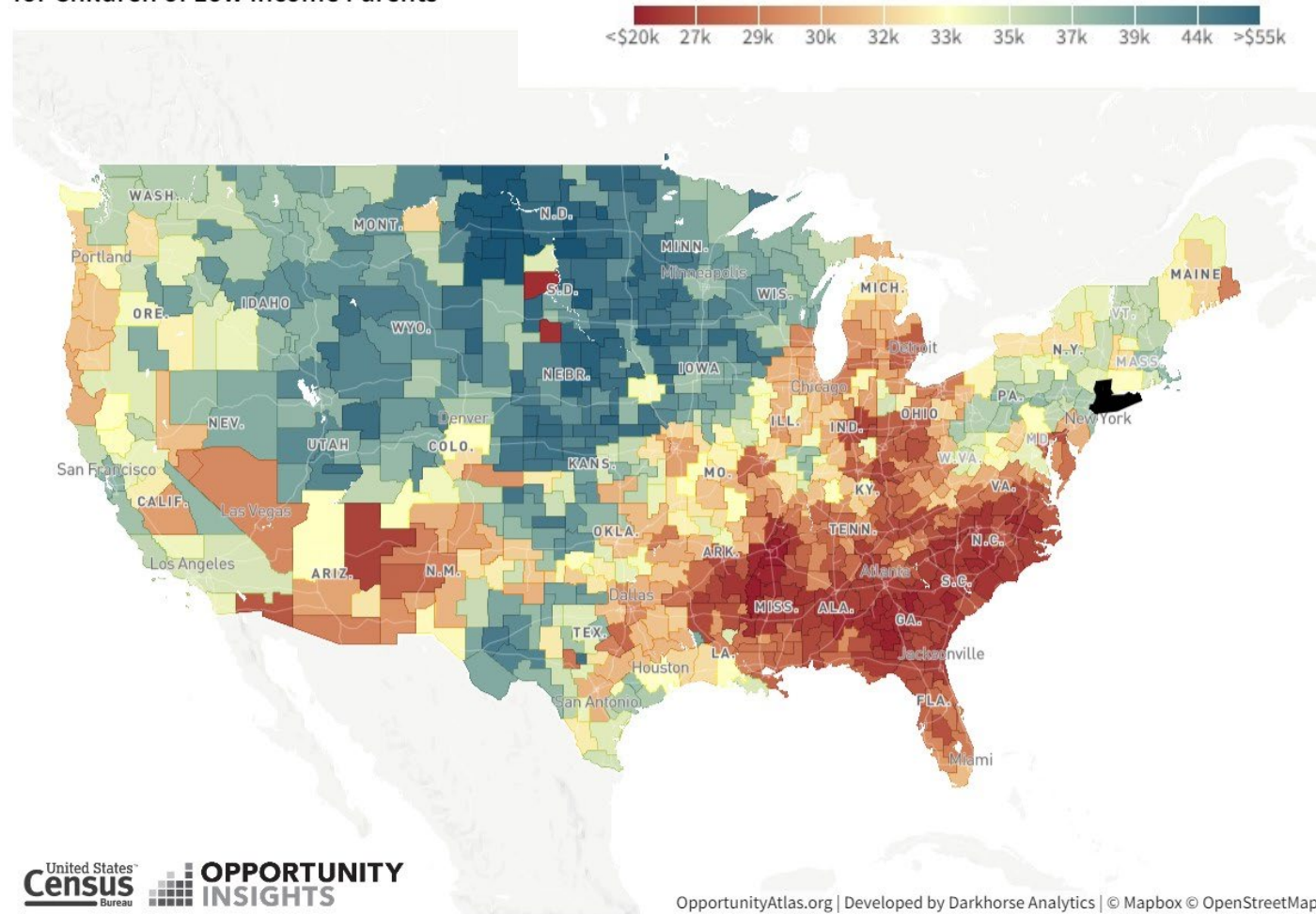


SESSION TITLE

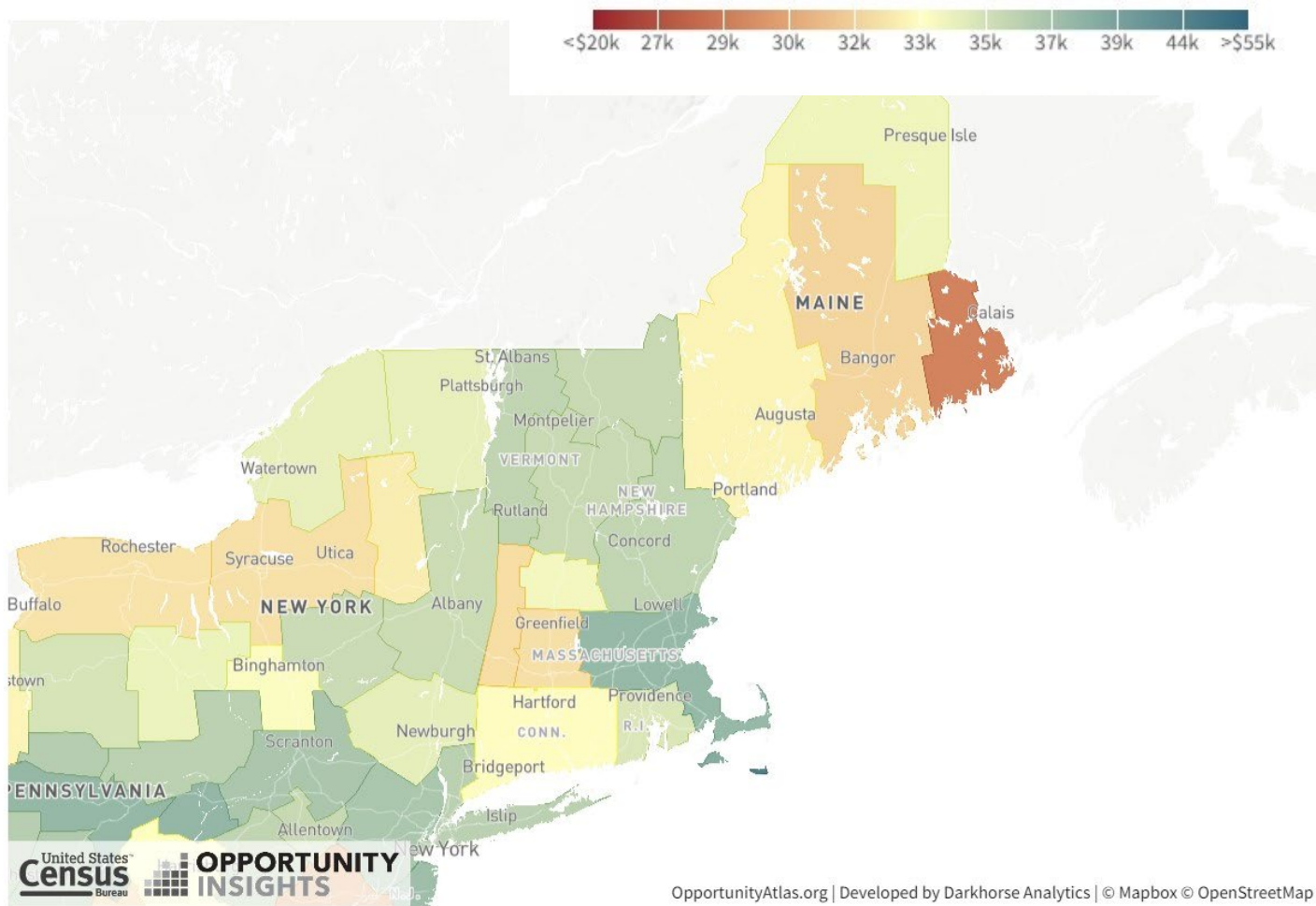
white + burke

VERMONT
DEVELOPMENT
CONFERENCE

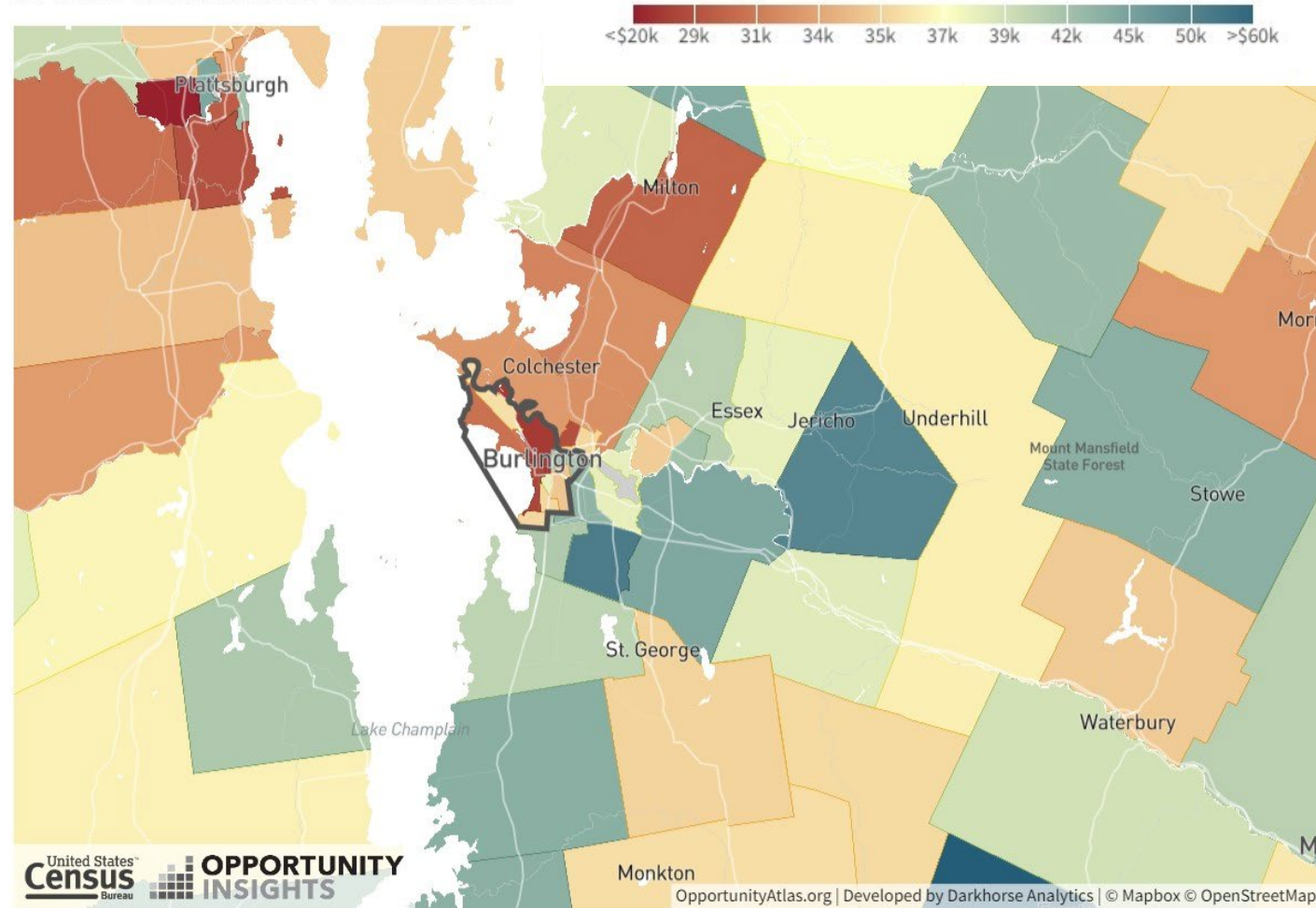
Household Income at Age 35 for Children of Low Income Parents



Household Income at Age 35 for Children of Low Income Parents



Household Income at Age 35 for White Children of Low Income Parents



Estimated median income of a household, between 2017-2021.

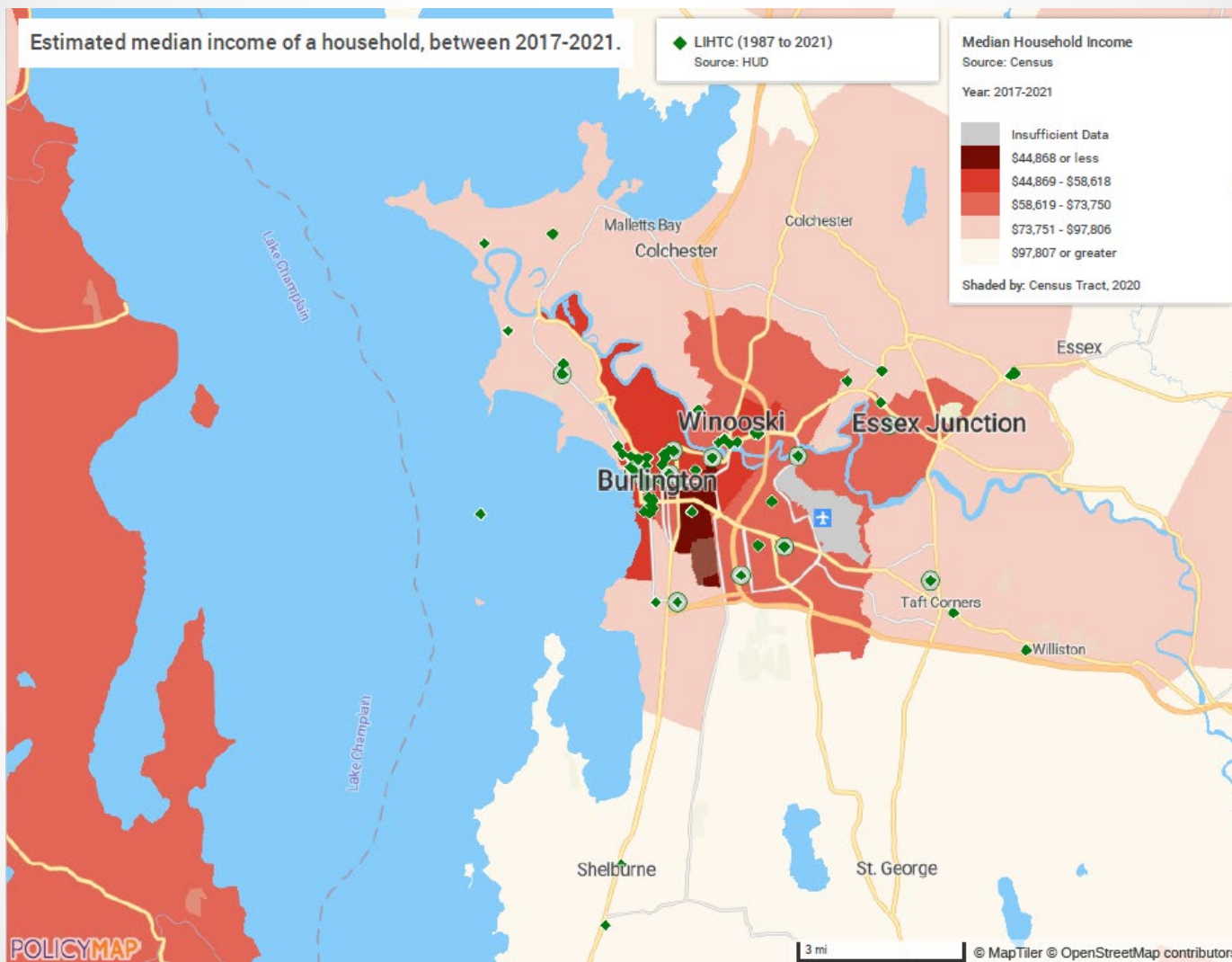
◆ LIHTC (1987 to 2021)
Source: HUD

Median Household Income
Source: Census

Year: 2017-2021

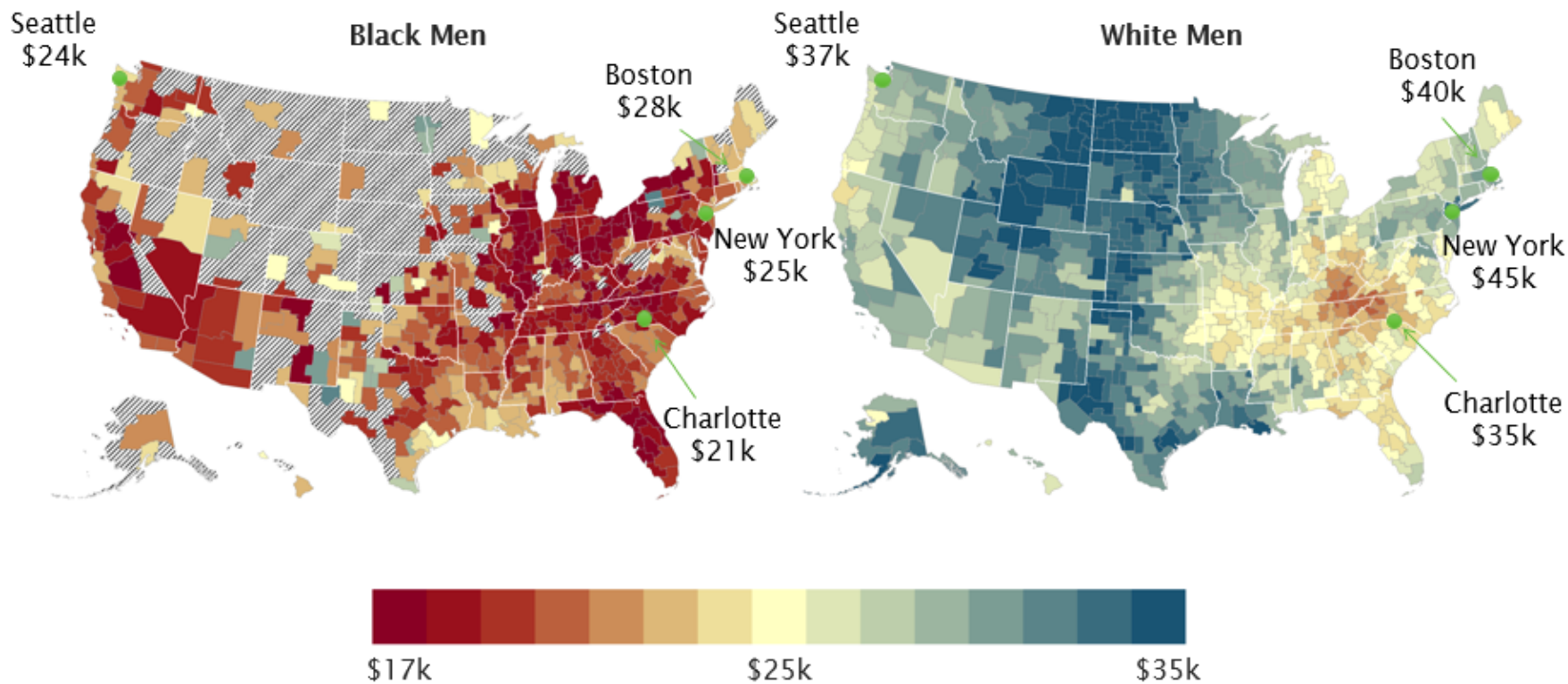


Shaded by: Census Tract, 2020



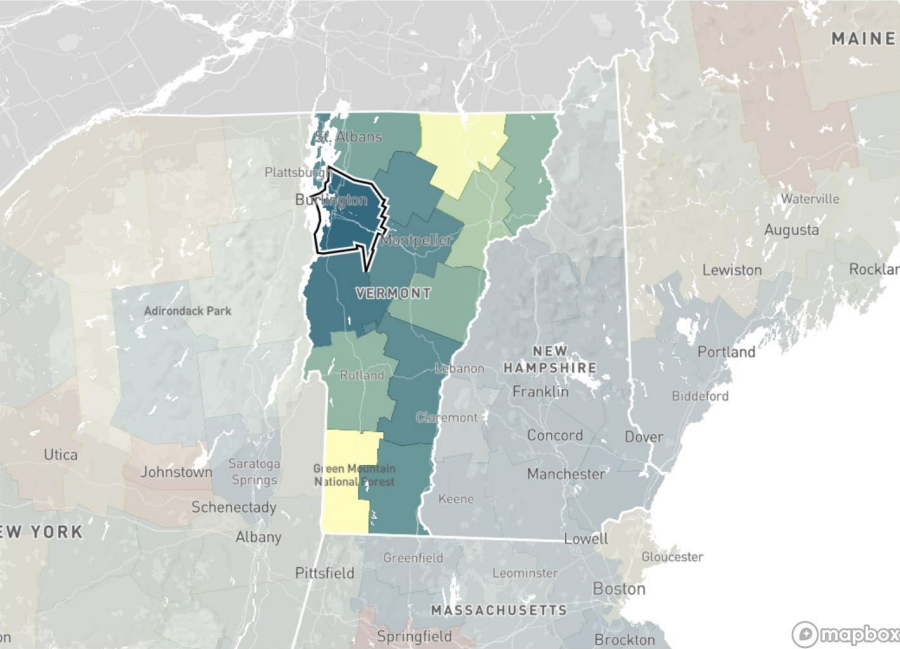
Two Americas: The Geography of Upward Mobility for Black vs. White Men

Average Earnings at Age 35 for Men Whose Parents Earned \$27,000 (25th Percentile)



Economic Connectedness (Current Income)

Chittenden County compared to counties in Vermont

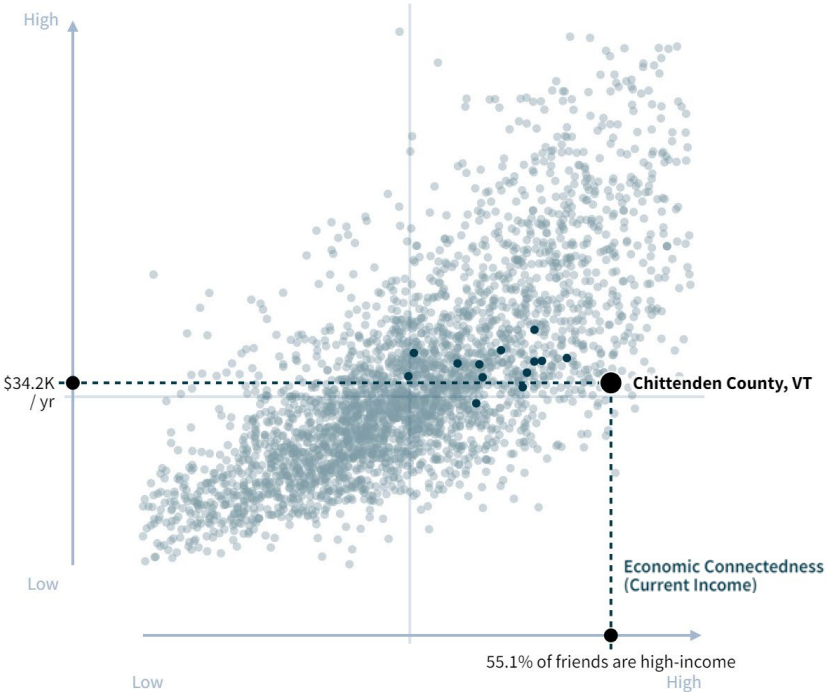


Economic Connectedness (Current Income)

and Upward Income Mobility

Chittenden County compared to counties in Vermont

Upward Income Mobility



QUESTIONS?

SPEAKERS

Onay Payne

Manulife Investment Management

David Williams

Lafayette Square



www.pwc.com/us/etre